



MENA WATER UTILITIES

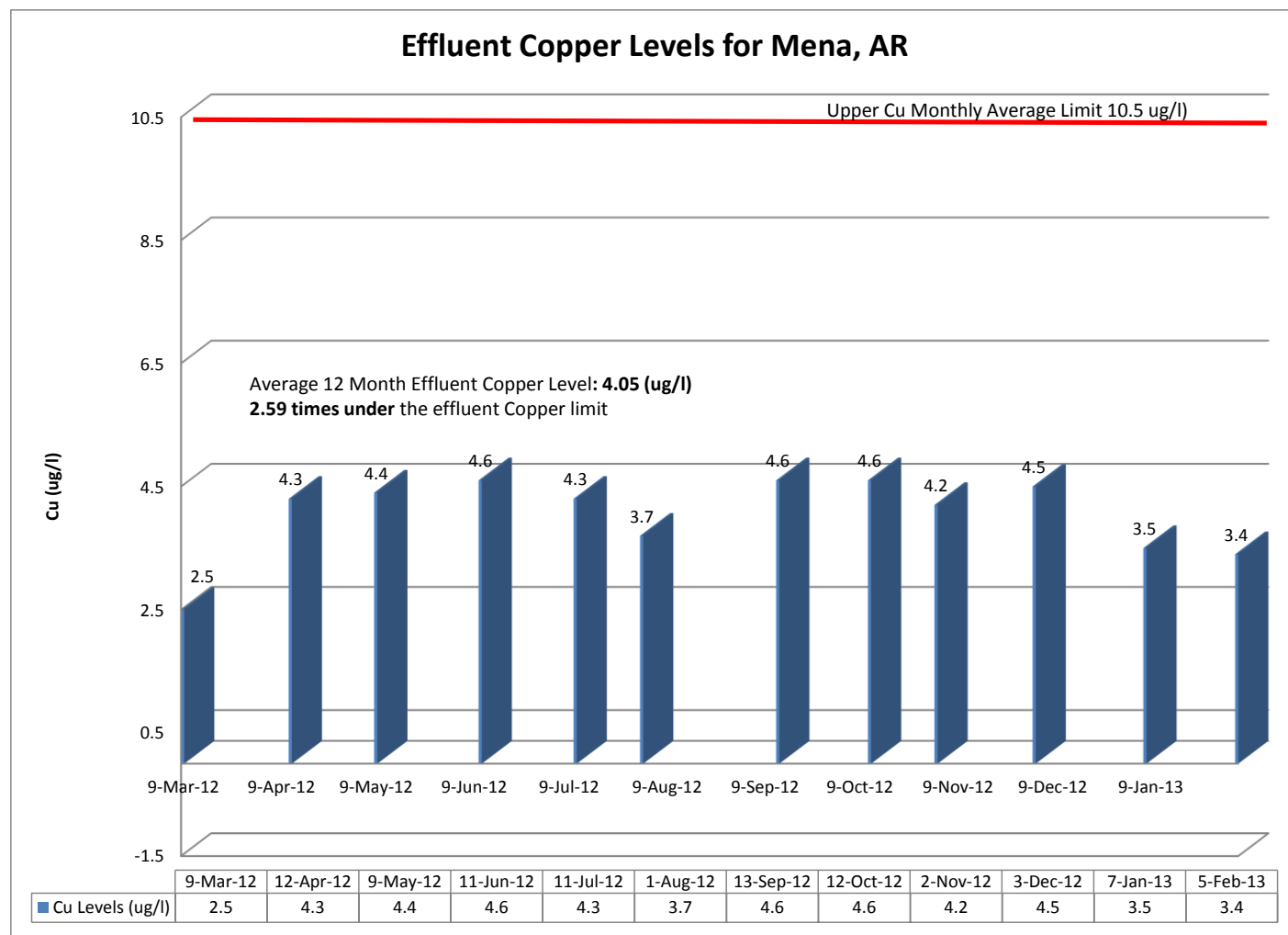
701 MENA STREET ~MENA, ARKANSAS ~71953
PH (479) 394-2761 ~ FAX (479) 394-5053

February 9, 2013

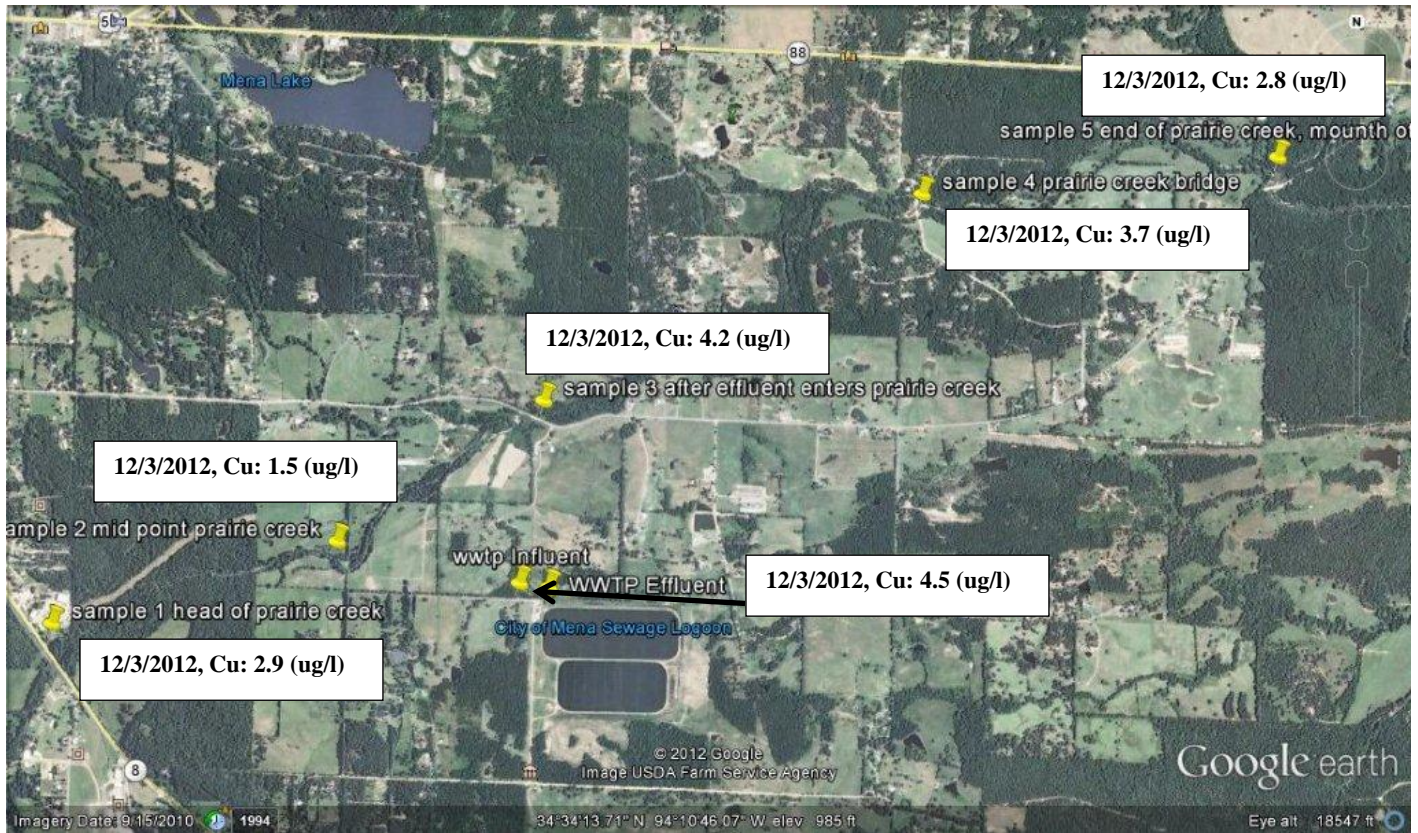
RE: Effluent Copper Analysis from the Mena Wastewater Treatment Plant

Dear, Mr Shane Byrum

Based on the last twelve months of lab results from American Interplex labs out of Little Rock, AR the effluent copper results for Mena Arkansas's wastewater pond system are 2.59 times **below** the 10.5 (ug/l) discharge standard set forth in Mena's discharge permit.



Further, testing along Prairie Creek reveals that copper concentrations at the head of Prairie Creek, at the midpoint of Prairie Creek and then at the end of Prairie Creek shows low levels of copper in all samples.



Low copper discharge levels are helping us maintain the chemical, physical, and biological integrity of Prairie Creek and will continue to ensure compliance with applicable water quality requirements in a long term sustained manner.

Our current pollution control facility is proving effective in achieving copper discharge permit compliance. Mena's success at controlling copper is due to the DynaSand® filtering process at the end of our wastewater treatment system. Our DynaSand® Filter is a continuous backwash upflow, deep bed, granular media filter that uses alum as a coagulant. The alum functions as a coagulant to remove suspended solids, phosphorous, copper and other metals from the effluent.

Mena's past and current copper discharge concentrations are far below Prairie Creek's loading capacity and should not materially increase the load of copper to our creek. Copper levels at Mena's current discharge concentrations will not cause the degradation of water quality in this stream.

I am writing this letter to ask if you would allow us to discontinue the current copper testing program. We are in compliance. In fact for the past two (2) years we have proven to be consistently far below compliance limits. Granting us this approval will allow us to re-task the small amount of funds we have to pond system upgrades and improvements. With your help in this way we can continue to meet our permit limits and have the funds to constantly improve our treatment system.

Thank you for your consideration.

Sincerely,

Mike Spencer
Wastewater Superintendent
The City of Mena Arkansas